

905 King Street West

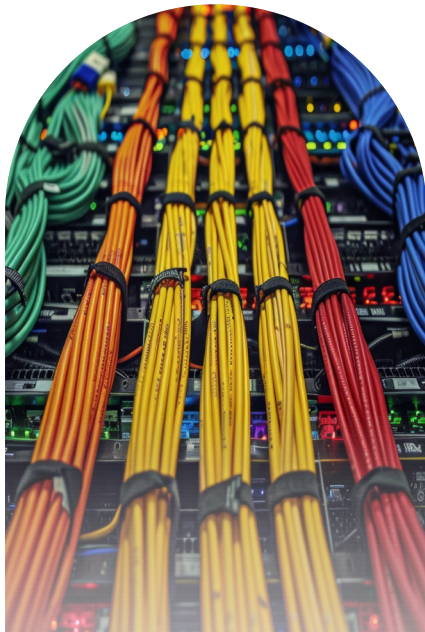
Location: 905 King St W, Toronto, Ontario, M6K 3G9, Canada

Canada's Most Connected Data Centres

Telehouse Canada operates three data centres in Toronto offering access to a dense network of carriers serving in a range of industries. As the premier network hub for cloud, hosting and large carrier networks, in Canada, we provide the fastest and most efficient routes to key North American markets.

905 King Street West, hosts our dark fibre network and is connected to our 151 and 250 Front Street West locations via high-capacity rings. This provides our customers with direct access to carriers in the Meet Me Rooms at 151 and 250 Front Street West, via a simple cross-connect set up.

Our 905 King Street West data centre has fast transport connections to Toronto's downtown area, with ample parking and transport links available. It offers all the benefits of Toronto's bustling city centre – without compromising on the connectivity of our data centres at 151 and 250 Front Street West.



Why choose Telehouse Canada as your colocation provider?



Where the world's data traffic meets

Access Toronto Internet Exchange (TorIX) and a diverse ecosystem of connectivity partners.



A safe home for your data

Full CCTV surveillance and dedicated on-site security personnel 24/7.



Support and access day or night

Call on our expert support desk or visit our convenient facilities 24/7, 365 days a year.



Connect to your cloud services

Established connections to Microsoft Azure ExpressRoute and Amazon Web Services Direct.



Easily accessible location

Located in downtown Toronto with excellent access to transportation systems, our data centres are ideal for frequent visits, audits, or hardware upgrades.



Sustainable facility

The portfolio is primarily cooled by deep lake water cooling system ensuring your equipment is stored in an environmentally responsible facility.



Uptime SLA

We operate the highest possible level of uptime and redundancy, guaranteeing SLA uptime of 99.999%.



Easily scalable infrastructure

We offer flexible and scalable colocation options, meaning you can closely match budgets to your service needs and reduce unnecessary overheads.

For more information visit: telehouse.ca



905 King Street West



Power Supply

- 2 -13.8 kV 5 MVA redundant services terminated in a Telehouse Canada owned scheme.
- 2- 600 v 4000 kVA transformers.
- 2- 120/208 v 1000kVA transformers.
- Independent and fully redundant electrical riser environments throughout the facility.

Generators

- 16- generators on site.

Fuel Delivery

- 4- TSSA approved fuel farms built to a 4h fire rating.
- 8- dual walled fuel tanks with a combined capacity of 85,000 Litres of diesel fuel with the ability to sustain the facility load for 24h.
- 2- separate SLAs with fuel vendors.

Cooling

- 4- 400 ton Daikin chillers.
- 2- 600 ton York chillers.

Fire Suppression

- Pre- action system for all colocation areas.
- VESDA in each colocation area.
- Sprinklered corridors and common areas.

Loading Dock and Freight Elevator

- Loading dock is on Canniff St.
- Freight Elevator dimensions: Weight 3,990 lbs (1,810 kg); Height 12 ft (3.66 m); Width 6.7 ft (2.04 m); Length 4.6 ft (1.4 m)

Digital Security

- Telehouse maintains strict adherence to best practices through the physical design of its networks, strict access controls, and continuous monitoring of all activity using third party security organizations.
- Monthly vulnerability assessments.
- Regular maintenance & monitoring.
- Continuous investments in next-generation technologies such as firewalls with cloud analytics and next-generation phishing.
- Endpoint detection and response.
- Controlled use of privileged users.
- Inventory of authorized and unauthorized hardware and software.

Physical Security

- 24 x 7 x 365 on- site security.
- Electromagnetic locking mechanisms to secure all public corridors and doors along paths of egress, and are released by card reader on both sides.

- 90+ cameras Honeywell Digital Video Manager CCTV with 90- day video capture and retention.
- Mantrap security systems deployed.
- For critical environments and data halls, access control is maintained via electric strike and biometric security hardware supporting facial recognition, retinal scanning, and fingerprint identification.

Connectivity

- 100% Carrier Neutral
- Exclusive owner and operator of the MMRs.
- 2 diverse fibre rings connecting the MMRs at 151 Front to 250 Front and 905 King; each fibre ring - 864 count fibre.
- Multiple long haul trackside fibre landings at 151 Front that are extended to all UDC properties via metro fibre.
- 62+ diverse entry points across the portfolio.

About Telehouse

Telehouse is a leading global data centre service provider that brings together a diverse range of more than 3,000 business partners including carriers, mobile and content providers, enterprises, cloud providers and financial services companies. Established in 1989 by Fortune 500 telecommunications company KDDI, Telehouse operates more than 45 data centres worldwide and provides reliable, secure, and flexible colocation solutions, enabling organisations to accelerate speed to market and create business opportunities through fast, efficient and secure interconnections.

Telehouse is committed to upholding the highest data centre standards and to delivering exceptional services for its customers.

Contact us regarding your requirements and we will propose the right solution for you.

Contact our Sales Team:

151 Front Street West
Toronto, ON, M5J 2N1
Canada

E: sales@ca.telehouse.com

W: www.telehouse.ca

For Exclusive Access -
register for the latest updates at

telehouse.ca

